



CNC work center

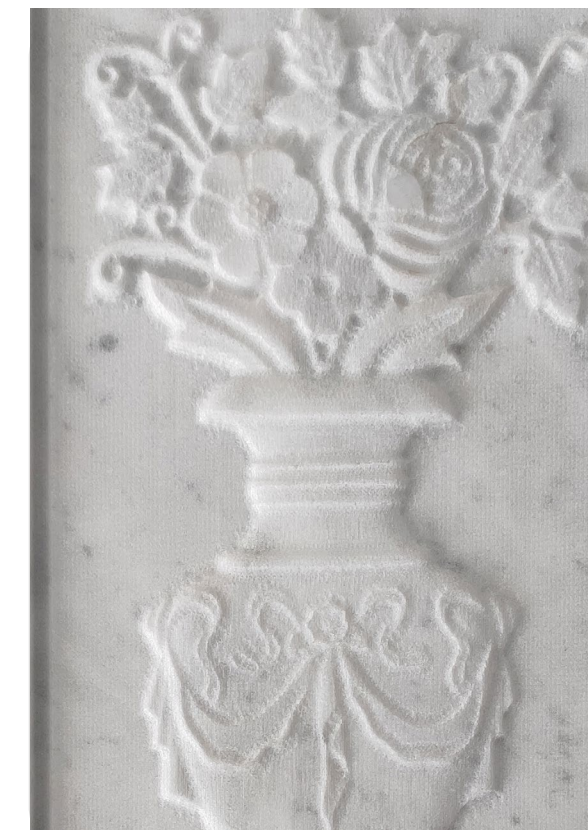
A laser cross shows where to position the suction cups and the work piece on the work table



The design of the "Sysmatic Evo" allows to carry out any kind of work job on big slabs



Inclined recessed drainer



Engraving bas-relief

TECHNICAL DATA

Work table

- Work table: 1300 x 800 mm made of natural stone, calibrated by the machine itself
- Axes strokes: 1300 x 800 x 200 mm (-X -Y -Z)

Structure

- Monobloc frame and bridge in processed steel, protected by ceramic paint

- Footprint, weight:
2250 x 1900 x 2000 mm, 1100 kg

Linear guides

- Tempered and passivated steel with 4 rows recirculating ball bearings

Operating head

- ISO40: 6.0 kW
- Rotation speed: 1500 - 10000 rpm
- Internal and external lubrication

Axis movements

- Hardened steel screws with ball bearings
- 2 brushless motors, 3.2 Nm torqu axes -X / -Y
- 1 brushless motor, 1.6 Nm torqu axis -Z

Tools Rack:

- 9 position (ISO40)

Vacuum System

- Vacuum distributor to connect 9 suction cups
- 1 Vacuum pump, high efficient Venturi system, simple maintenance

Control console

- 21.5" touch screen, all parameters at a glance
- LAN and WIFI connection for remote assistance
- dedicated graphic card
- SSD hard disk
- Automatic back up, to avoid data losses
- Proprietary software GCAM 3D - developed to process marble and granite
- CAD-CAM supported by pre-installed macros to program quickly any work job in the simplest way

Laser

- 2 highly visible laser, to precisely position work pieces and suction cups

Power supplies

- Electric: 400V 50/60 Hz three-phase (20A)
230V 50/60 Hz three-phase (30A)
on demand UL and CSA
- Pneumatic: 10 bar pressure, 150 l/min.
- Compressed air: A compressor of min. 4 kW and 300 l tank is recommended
- Water connection:
 - Spindle lubrication: clean water min. 5 l/min, min. 2 bar
 - External tool lubrication: recycled water 15 l/min, min. 2 bar



Edge profiling and polishing

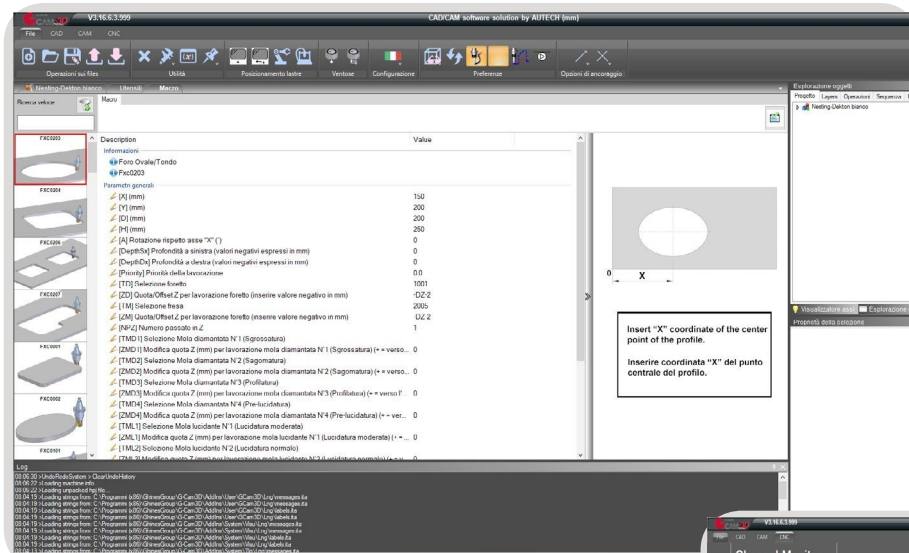


CNC WORK CENTER

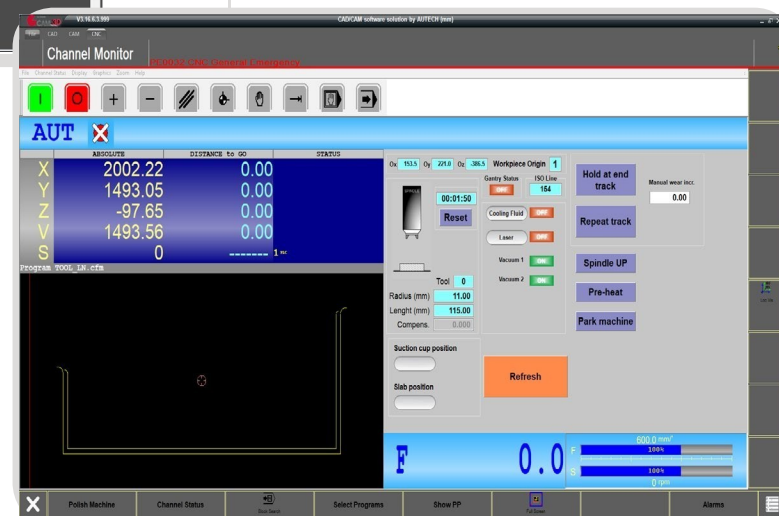
The **Sysmatic Evo** is the ideal machine to ease your work of cutting out sink bowls of any stone material, recessing inclined or flat drain boards, engraving bas-relief or letters, with extreme simplicity.

AUTOMATIC TOOL CHANGE

6.0 kW Iso40 spindle



- Programming simply by macros
- Imports ISO and DXF files
- Intuitive CAD CAM
- Nesting function
- Teleassistance
- Automatic backup



Ghines Group srl
 Registered HQ: Via Marechiese 338, 47923 Rimini (RN) Italy
 Operational HQ: Via della Scienza 22, 47822 Santarcangelo di Romagna (RN) Italy
 tel. (+39) 0541 751080
 info@ghines.com www.ghines.com